

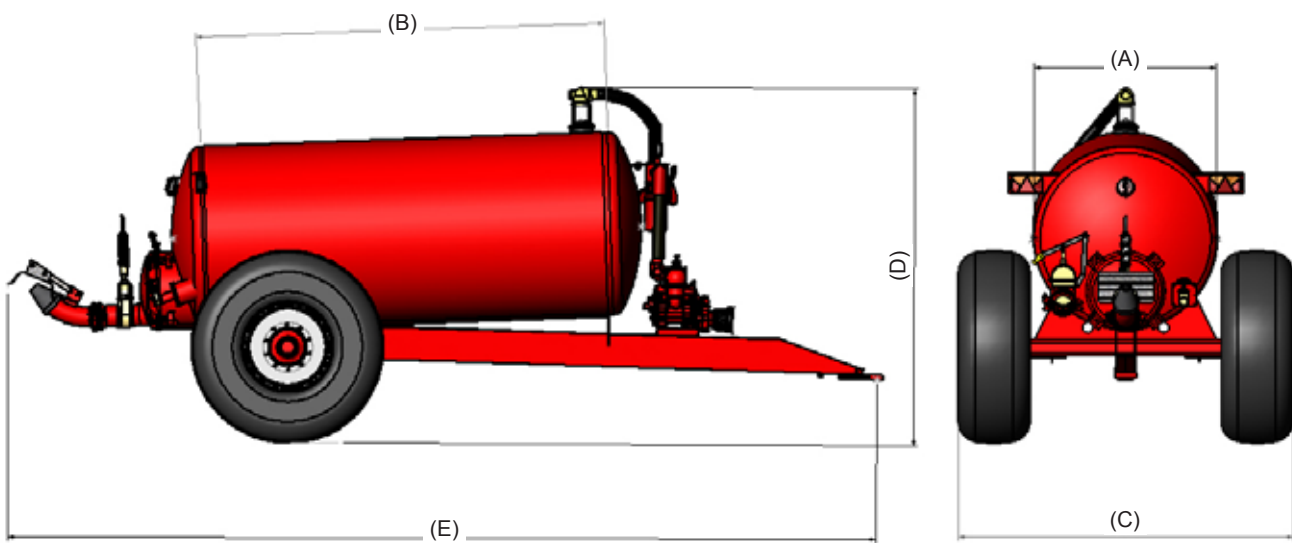


Slurry Tankers & Applicators



- Sprung drawbar
- 24" Galvanised rear access hatch
- Full L.E.D. lighting c/w high level rear clusters.
- Galvanised suction hose hanger brackets (on one side)
- Four inlets, one at each corner. One fitted with manual gate valve c/w over centre handle, greasing point & Quick attach coupling. Others fitted with galvanised blanking plates.
- 6mm plate barrel
- 6" diameter 6m suction hose as standard
- Dual sided manual vacuum pump change over
- Hydraulic braking via two cylinders per axle
- Ratchet style handbrake
- Tank braced internally (Internal tank baffles to BS EN 707: 2018)
- Two pack paint finish
- Sight glass front and rear





SINGLE AXLE TANKER C/W NON-RECESSED BARREL SPECIFICATION SHEET

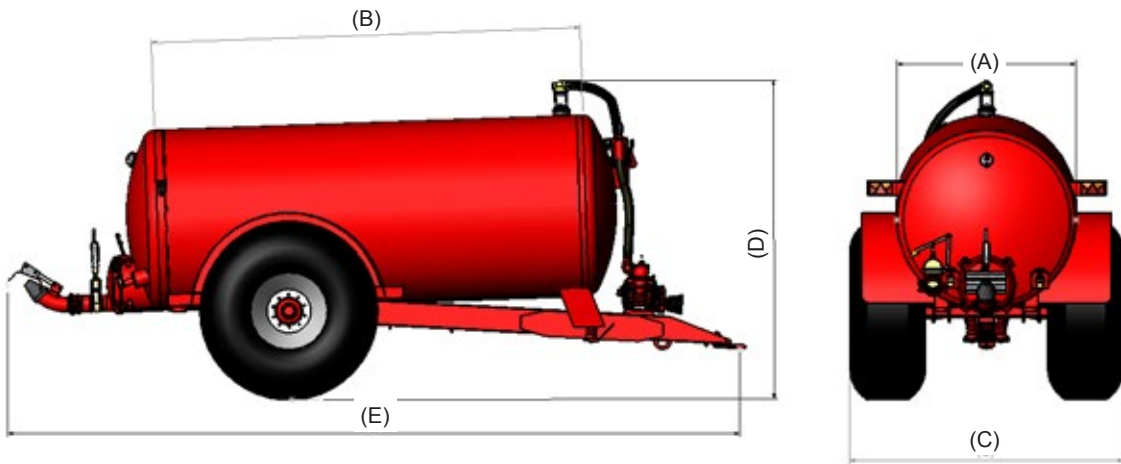
Item	Tanker Size	A Dome Ø	B Barrel Length (m) Excluding dome	C Tanker Width (m)	D Overall Height (m)	E Overall Length exc. applicator (m)	Vacuum Pump	Axle	Brakes (Hydraulic)	Tyres
6	1600 Gallon (7260 Litre)	1.52 (60")	3.65	2.55	3.0	6.6***	9000L	90mm 8 Stud	400 x 80	550/60 x 22.5
7		1.52 (60")	3.65	2.56	3.0	6.6***	9000L	90mm 8 Stud	400 x 80	560/60 x 22.5
8		1.52 (60")	3.65	2.54	3.1	6.6***	9000L	90mm 8 Stud	400 x 80	21.3 x 24
9		1.52 (60")	3.65	2.65	3.1	6.6***	9000L	90mm 8 Stud	400 x 80	600/55 x 26.5
10	1850 Gallon (8400 Litre)	1.68 (66")	3.65	2.56	3.2	6.6***	9000L	90mm 8 Stud	400 x 80	560/60 x 22.5
11		1.68 (66")	3.65	2.65	3.3	6.6***	9000L	90mm 8 Stud	400 x 80	600/55 x 26.5
12		1.68 (66")	3.65	2.7	3.3	6.6***	9000L	90mm 8 Stud	400 x 80	650/55 x 26.5
13	2050 Gallon (9300 litre)	1.68 (66")	4	2.56	3.2	6.8***	11000L	90mm 8 Stud	400 x 80	560/60 x 22.5
14		1.68 (66")	4	2.65	3.3	6.8***	11000L	90mm 8 Stud	400 x 80	600/55 x 26.5
15		1.68 (66")	4	2.81	3.3	6.8***	11000L	90mm 8 Stud	400 x 80	710/50 x 26.5

Dimensions are for standard vacuum tankers and subject to change depending on options selected. In accordance with our policy of continued development we reserve the right to alter specification dimensions and/or design without notice.

*** Overall length is measured to the rear valve and excludes a splash plate applicator or any other optional extras.

- Sprung drawbar
- 24" Galvanised side access hatch
- Four inlets, one at each corner. One fitted with manual gate valve c/w over centre handle, greasing point & Quick attach coupling. Others fitted with galvanised blanking plates.
- Full L.E.D. lighting c/w high level rear clusters.
- Galvanised suction hose hanger brackets (on one side)
- 6mm plate barrel
- 6" diameter 6m suction hose as standard
- Dual sided manual vacuum pump change over
- Hydraulic braking via two cylinders per axle
- Ratchet style handbrake
- Tank braced internally (Internal tank baffles to BS EN 707: 2018)
- Two pack paint finish
- Sight glass front and rear
- Plastic mudguard extensions
- Full length chassis
- Mounting plates, sump and outlet for NC trailing shoe/dribble bar applicator





SINGLE AXLE RECESSED BARREL SPECIFICATION SHEET

Item	Tanker Size	A Dome Ø	B Barrel Length (mm)	C Tanker Width (mm)	D Overall Height (m)	E Overall Length (m)	Vac Pump	Axle	Brakes	Tyres
16	1600 Gallon (7260 litre)	1.52 (60")	3.66	2.75	2.90	6.6***	9000L	120mm 10 Stud	420 x 180	28.1 x 26
17		1.52 (60")	3.66	2.78	2.95	6.6***	9000L	120mm 10 Stud	420 x 180	800/65 R32
18	1850 Gallon (8400 litre)	1.52 (66")	3.66	2.75	3.05	6.6***	9000L	120mm 10 Stud	420 x 180	28.1 x 26
19		1.68 (66")	3.66	2.78	3.10	6.6***	9000L	120mm 10 Stud	420 x 180	800/65 R32
20	2050 Gallon (9300 litre)	1.68 (66")	4.02	2.75	3.05	7.00***	11000L	120mm 10 Stud	420 x 180	28.1 x 26
21		1.68 (66")	4.02	2.78	3.10	7.00***	11000L	120mm 10 Stud	420 x 180	800/65 R32
22		1.68 (66")	4.02	2.9	3.15	7.00***	11000L	120mm 10 Stud	420 x 180	900/60 x 32
23		1.68 (66")	4.02	3.05	3.10	7.00***	13500L	120mm 10 Stud	420 x 180	1050/50 x R32
24	2250 Gallon (10200 litre)	1.68 (66")	4.5	2.78	3.20	7.50***	11000L	150mm 10 Stud	420 x 180	800/65 R32
25		1.68 (66")	4.5	2.9	3.25	7.50***	11000L	150mm 10 Stud	520 x 180	900/60 x 32
26		1.68 (66")	4.5	3.05	3.20	7.50***	11000L	150mm 10 Stud	520 x 180	1050/50 x R32
27	2250 Gallon (11350 litre)	1.83 (72")	4.33	2.78	3.30	7.35***	11000L	150mm 10 Stud	420 x 180	800/65 R32
28		1.83 (72")	4.33	2.9	3.35	7.35***	11000L	150mm 10 Stud	520 x 180	900/60 x 32
29		1.83 (72")	4.33	3.05	3.30	7.35***	11000L	150mm 10 Stud	520 x 180	1050/50 x R32
30	3000 Gallon (13600 litre)	1.83 (72")	5.06	2.78	3.40	8.06***	13500L**	150mm 10 Stud	420 x 180	800/65 R32
31		1.83 (72")	5.06	2.9	3.45	8.06***	13500L**	150mm 10 Stud	520 x 180	900/60 x 32
32		1.83 (72")	5.06	3.05	3.40	8.06***	13500L**	150mm 10 Stud	520 x 180	1050/50 x R32

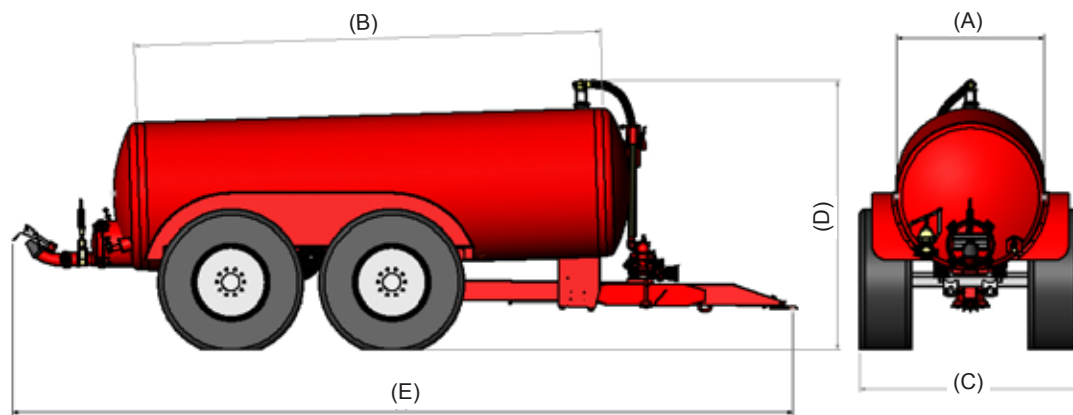
Dimensions are for standard vacuum tankers and subject to change depending on options selected. In accordance with our policy of continued development we reserve the right to alter specification dimensions and/or design without notice.

** c/w with air balast for cooler operation

*** Overall length is measured to the rear valve and excludes a splash plate applicator or any other optional extras.

- Sprung drawbar
- 24" Galvanised side access hatch
- Four inlets, one at each corner. One fitted with manual gate valve c/w over centre handle, greasing point & Quick attach coupling. Others fitted with galvanised blanking plates.
- Full L.E.D. lighting c/w high level rear clusters.
- Galvanised suction hose hanger brackets (on one side)
- 6mm plate barrel
- 6" diameter 6m suction hose as standard
- Dual sided manual vacuum pump change over
- Hydraulic braking via two cylinders per axle
- Ratchet style handbrake
- Tank braced internally (Internal tank baffles to BS EN 707: 2018)
- Two pack paint finish
- Sight glass front and rear
- Plastic mudguard extensions
- Full length chassis
- Adjustable height drawbar
- Rear steering axle
- Mounting plates, sump and outlet for NC trailing shoe/dribble bar applicator





TANDEM AXLE TANKER SPECIFICATION SHEET

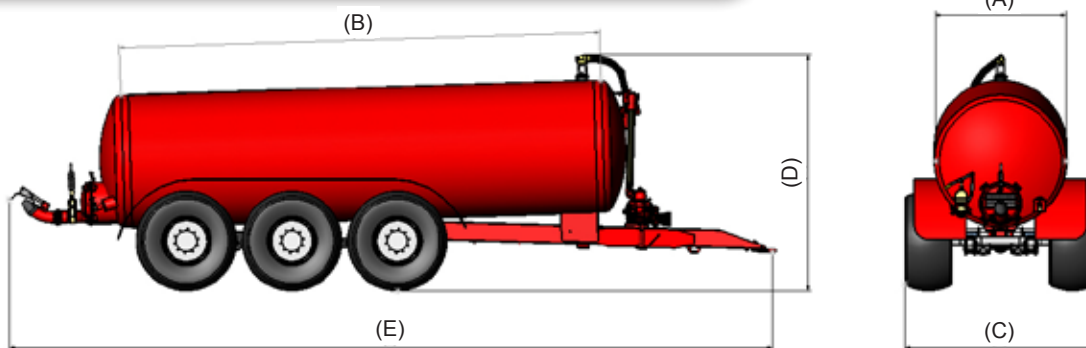
Item	Tandem Axle Tanker Size	A Dome Ø (m)	B Barrel Length (m) Excluding Dome	C Tanker Width (mm)	D Overall Height (m)	E Overall Length exc. applicator (m)	Vacuum Pump	Axle	Brakes (Hydraulic)	Tyres
33		1.68 (66")	5	2.55	3.2	8***	11000L	127mm 10 Stud	420 x 180	550/60 x 22.5
34		1.68 (66")	5	2.56	3.2	8***	11000L	127mm 10 Stud	420 x 180	560/60 x 22.5
35		1.68 (66")	5	2.7	3.3	8***	11000L	127mm 10 Stud	420 x 180	600/55 x 26.5
36		1.83 (72")	5.06	2.61	3.3	8.06***	13500L**	127mm 10 Stud	420 x 180	560/60 x 22.5
37		1.83 (72")	5.06	2.65	3.4	8.06***	13500L**	127mm 10 Stud	420 x 180	600/55 x 26.5
38		1.83 (72")	5.06	2.75	3.4	8.06***	13500L**	127mm 10 Stud	420 x 180	650/55 x 26.5
39		1.83 (72")	5.06	2.81	3.4	8.06***	13500L**	127mm 10 Stud	420 x 180	710/50 x 26.5
40	3500 Gallon (15900 litre)	1.98 (78")	4.98	2.66	3.4	7.98***	13500L**	150mm 10 Stud	420 x 180	560/60 x 22.5
41		1.98 (78")	4.98	2.8	3.4	7.98***	13500L**	150mm 10 Stud	420 x 180	600/55 x 26.5
42		1.98 (78")	4.98	2.75	3.4	7.98***	13500L**	150mm 10 Stud	420 x 180	600/55 x 26.5
43		1.98 (78")	4.98	2.81	3.4	7.98***	13500L**	150mm 10 Stud	420 x 180	710/50 x 26.5
44	4000 Gallon (18150 Litre)	1.98 (78")	5.8	2.8	3.5	8.8***	13500L**	150mm 10 Stud	420 x 180	600/55 x 26.5
45		1.98 (78")	5.8	2.75	3.5	8.8***	13500L**	150mm 10 Stud	420 x 180	650/55 x 26.5
46		1.98 (78")	5.8	2.81	3.5	8.8***	13500L**	150mm 10 Stud	420 x 180	710/50 x 26.5
47		1.98 (78")	5.8	2.85	3.6	8.8***	13500L**	150mm 10 Stud	420 x 180	750/60 x 30.5
48		1.98 (78")	5.8	2.85	3.6	8.8***	13500L**	150mm 10 Stud	420 x 180	850/60 x 30.5
49	4500 Gallon (20430 litre)	1.98 (78")	6.5	2.7	3.5	9.5***	13500L**	150mm 10 Stud	420 x 180	600/55 x 26.5
50		1.98 (78")	6.5	2.75	3.5	9.5***	13500L**	150mm 10 Stud	420 x 180	650/55 x 26.5
51		1.98 (78")	6.5	2.81	3.5	8.8***	13500L**	150mm 10 Stud	420 x 180	710/50 x 26.5
52		1.98 (78")	6.5	2.85	3.6	9.5***	13500L**	150mm 10 Stud	420 x 180	750/60 x 30.5
53		1.98 (78")	6.5	2.95	3.6	9.5***	13500L**	150mm 10 Stud	420 x 180	850/60 x 30.5

Dimensions are for standard vacuum tankers and subject to change depending on options selected. In accordance with our policy of continued development we reserve the right to alter specification dimensions and/or design without notice.

** c/w with air balast for cooler operation

*** Overall length is measured to the rear valve and excludes a splash plate applicator or any other optional extras.

- Sprung drawbar
- 24" Galvanised rear access hatch
- Full L.E.D. lighting c/w high level rear clusters.
- Galvanised suction hose hanger brackets (on one side)
- Four inlets, one at each corner. One fitted with manual gate valve c/w over centre handle, greasing point & Quick attach coupling. Others fitted with galvanised blanking plates.)
- 6mm plate barrel
- 6m suction hose as standard
- Plastic mudguard extensions
- Full length chassis
- Adjustable height drawbar
- Command steering front & rear axle
- K80 spoon
- Dual sided manual vacuum pump change over
- Hydraulic braking via two cylinders per axle
- Ratchet style handbrake
- Tank braced internally (Internal tank baffles to BS EN 707: 2018)
- Two pack paint finish
- Sight glass front and rear
- Mounting plates, sump and outlet for NC trailing shoe/dribble bar applicator



TRI-AXLE TANKER SPECIFICATION SHEET

Item	Tridem axle tanker size	A Dome Ø	B Barrel Length (m) Excluding Dome	C Tanker Width (m)	D Overall Height (m)	E Overall Length exc. applicator(m)	Sprung Drawbar	Vacuum Pump	Axle	Brakes	Tyres
54	4000	1.98 (78")	5.8	2.8	3.4	9 ***	Yes	13500L**	150mm 10 Stud	420 x 180	600/55 x 26.5
55	4500	78"	6.5	2.8	3.5	9 ***	Yes	13500L**	Ø150mm 10 Stud Tandem Axle	420 x 180	600 x 55 x 26.5 Radial
56	5000	78"	7.3	2.8	4.3	9 ***	Yes	13500L**	Ø150mm 10 Stud Tandem Axle	420 x 180	650 x 50 x 26.5 Radial
57	5000	78"	7.3	2.81	4.3	9 ***	Yes	13500L**	Ø150mm 10 Stud Tandem Axle	420 x 180	710 x 50 x 26.5 Radial
58	5500	78"	8.1	2.8	5.1	9 ***	Yes	13500L**	Ø150mm 10 Stud Tandem Axle	420 x 180	650 x 50 x 26.5 Radial
59	5500	78"	8.1	2.8	5.1	9 ***	Yes	13500L**	Ø150mm 10 Stud Tandem Axle	420 x 180	710 x 50 x 26.5 Radial

Dimensions are for standard vacuum tankers and subject to change depending on options selected. In accordance with our policy of continued development we reserve the right to alter specification dimensions and/or design without notice.

** c/w with air balast for cooler operation

*** Overall length is measured to the rear valve and excludes a splash plate applicator or any other optional extras.

The range of NC Dribble Bars can be used in conjunction with a slurry tanker or attached to a tractor via a heavy duty umbilical sub-frame. NC Dribble bars are available in 3 working widths: -

	7.6m	9m	12m
Outer breakback	Spring with manual reset	Hydraulic with auto reset	Hydraulic with auto reset
Transport width	2520mm	2520mm	2520mm
Number of outlets	30	36	48
Hose centres	260mm	255mm	255mm
Weight	490kg	650kg	TBC

Features of the NC Dribble bar: -

- Arms sloped slightly upwards in working position to ensure optimal performance on all slopes
- The outer arm on the 7.6m machine is fitted with a spring break back which prevents damage to the machine if it hits a fence post, tree etc.
- The outer arm on the 9 & 12m machines has a unique hydraulic spring back which automatically resets if it hits an object.
- Hydraulic cylinders for folding are fitted with over centre valves for smooth and safe operation
- Arms fold past vertical to minimise damage from trees during transport
- Compact transport width
- LED stop/tail/indicators
- Large diameter pivot pins to minimise wear
- High tensile steel used to ensure a lightweight design which minimises ground compaction
- Stone/debris trap below macerator
- Parking stands to ensure machine stable and safe when not in use



All NC Slurry Applicators are fitted with an Alrena precision macerator as standard which features a newly developed cutting system with rotating round knives. The pivot point of the rotating cutting discs is off-centre relative to the holes of the perforated plate.

Due to the different pivot points and the resistance of the solids to be cut in the slurry, the knives rotate constantly. Thanks to this forced rotation, each cut is carried out with a new piece of knife. The rotation also provides the advantage that the knives self-sharpen and no wear grooves are generated. Spiral springs between the left and right knives tension both knives equally. Features of the Alrena precision macerator: -

- Precise distribution
- 40% higher air passage than traditional macerators because of hollow shaft
- Dry running will not lead to excessive wear as the temperature of the precision macerator will stay low
- Reduced wear due to newly developed cutting system with rotating knives
- Self-sharpening knives
- More cutting movements per revolution of the rotor
- Slurry inlet with no taper to restrict flow
- Perfectly balanced rotor due to the use of several spiral springs
- Springs tension automatically
- Reduced maintenance compared to traditional macerators
- Significantly less power consumption

Features of the NC Trailing Shoe: -

- 7.5 m working width
- Outlets individually spring mounted
- Machine mounted on a forklift style mast for close mounting to tank thus keeping weight transfer & tail swing to a minimum
- Mast floats when lowered to enhance movement over varying terrain
- Hydraulic cylinders for folding are fitted with over centre valves for smooth and safe operation
- Arms fold past vertical to minimise damage from tress during transport
- Outer arm hydraulically folded for reduced transport height
- Compact transport width
- LED stop/tail indicators
- Large diameter pivot pins to minimise wear
- High tensile steel used to ensure a lightweight design which minimises ground compaction
- Stone/debris trap below macerator
- Parking stands to ensure machine stable and safe when not in use





Document Holder



Jacking Point



LED Lights



Plastic Mudguards



Manual Pump Change Over



Full Length Chassis



Suction Hose



Adjustable Drawbar (Tandem Axle)



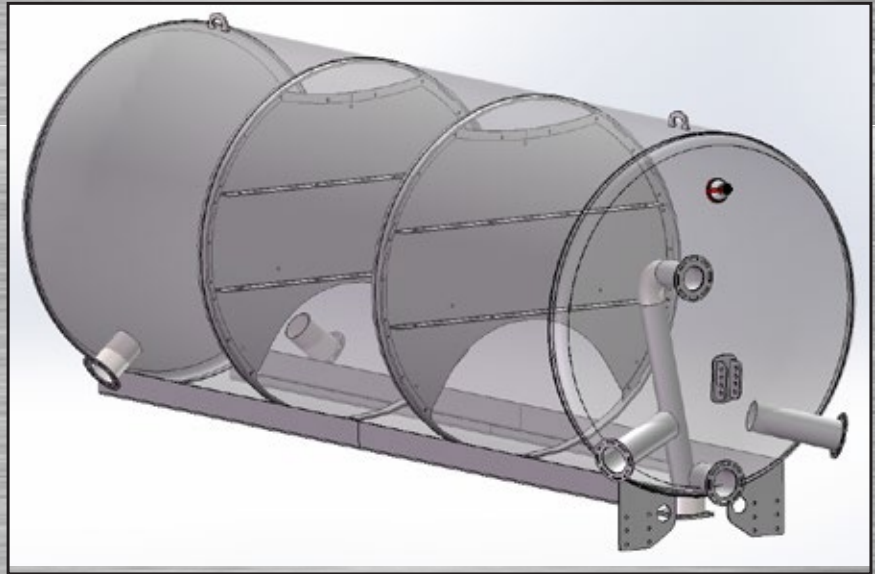
Top and main Syphon



Fill point with quick attach



Hose and Cable Storage



Dribble Bar Brackets and Baffles



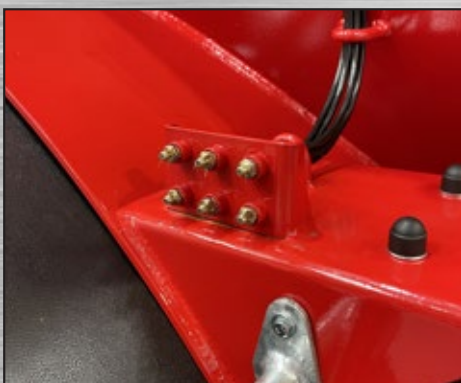
Sprung Drawbar



Pump Exhaust



Top Fill Hatch c/w remote greasing



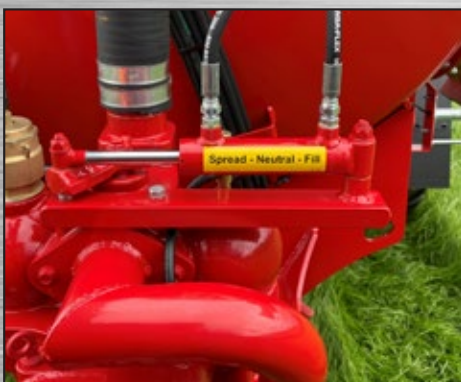
Top Hatch Central Greasing



Dual LED and Work Lights



Additional Quick Attach



Hydraulic Change Over



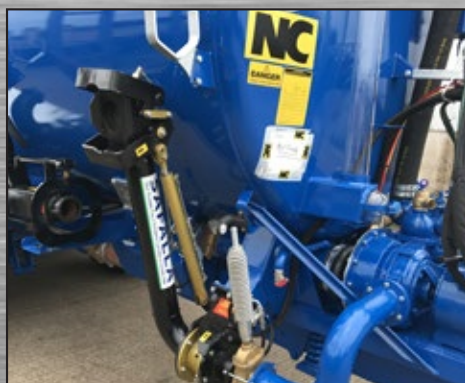
Hydraulic Drive Pump



Sludgicator



Full Length Sight Tube



Safalla Arm



Over Hedge Boom



Oil Carrier



Level Indicator



Turbo Filler



Internal Agitator



Hand Wash Tank



LCD Controller



Ladder Access on Single Axle Tanker



Manual Hydraulic Hand Pump



Short Boom



Auto Fill Arm

- Sprung drawbar
- Full LED Lighting c/w high level rear clusters
- Galvanised suction hose hanger brackets (on one side)
- 6mm plate barrel
- Hydraulic braking via 2 cylinders
- Tank braced internally (internal tank baffles to BS EM 707:2018)
- Classic Mudguard Extensions
- Ratchet style handbrake
- Sight glass front and rear
- Two pack paint finish



Please refer to Vacuum Tanker Specification tables on previous pages. However, a top fill tanker is 330mm (13") shorter and is up to 100mm lower than a Vacuum tanker.

Optional Extras

Brakes

1. Dual air hydraulic single axle
2. Dual air hydraulic tandem axle
3. Dual air hydraulic tridem
4. Air only brakes
5. Hydraulic load sensing (suspension only)
6. Air load sensing (suspension only)
7. 12-volt ABS c/w Susie (only available on high-speed axles)
8. Automatic slack adjusters (only available on high-speed axles)
9. ABS ready kit (only available for highspeed axles)
10. NC cable breakaway
11. NC electric breakaway
12. Euro safe breakaway
13. Power brake in lieu of standard handbrake
14. Premium red and yellow sussie c/w handle grips (Dual or air brakes only)

Electrics

15. Reversing camera
16. 2 x rear LED work lights
17. Dual taillights (Two rear positioned side-by-side. On tankers 1 cluster can be positioned on the Rear of the mudguards and the other at full height – please specify)
18. LED flasher (2 loose wires for customer to connect to tractor)
19. LED flasher c/w on/off switch and wired into side lights
20. LED control kit
21. Side marker lights flashing as indicators

Warning Lights

22. EU slowing vehicle warning triangle
23. Side and rear reflective tape

Towing Eye

24. Swivel hitch
25. Adjustable hitch (not available with swivel)
26. K80 weld-on spoon
27. K80 bolt-on spoon
28. Bolt-on 50mm agri towing eye

29. Towing eye locking system

Parking Stand

30. Screw jack (commercial type)
31. Hydraulic jack

PUMPING OPTIONS

32. 11000L vacuum pump in-lieu of 9000L pump
33. 13500L vacuum pump c/w air ballast in-lieu of 11000L pump
34. Hydraulic change over on vacuum pump
35. Vacuum pump silencer
36. Oil reservoir on vacuum pump
37. Hydraulic drive for 11000L vacuum pump (requires 80 litres per minute oil flow)
38. Hydraulic drive for 13500L vacuum pump (requires 100 litres per minute oil flow) Points 6 & 7 are drawbar mounted
39. Side mounting of hydraulic drive vacuum pump
40. Water cooled 14100L KTS 840 (MFR-C) vacuum pump c/w 540 rpm PTO drive in-lieu of 13500L pump
41. Water cooled 14100L KTS 840 (DFR-C) vacuum pump c/w 1000 rpm PTO drive in-lieu of 13500L pump
42. Water cooled 14100L KTS 840 (HFR-C) vacuum pump c/w hydraulic drive in-lieu of 13500L pump
43. 9000L Vacuum pump combined with Centrifugal pump c/w 4" valve for umbilical system
44. 11000L Vacuum pump combined with Centrifugal pump c/w 4" valve for umbilical system
45. 13500L Vacuum pump combined with Centrifugal pump c/w 4" valve for umbilical system

46. 11000L Vacuum pump combined with High pressure L27 pump c/w 4" valve for umbilical system
47. 11000L Vacuum pump combined with High pressure L35 pump c/w 4" valve for umbilical system
48. 13500L Vacuum pump combined with High pressure L27 pump c/w 4" valve for umbilical system
49. 13500L Vacuum pump combined with High pressure L35 pump c/w 4" valve for umbilical system
50. Hydraulic drive 11000L vacuum pump and PTO driven high pressure L27 pump c/w 4" valve for umbilical system
51. Hydraulic drive 13500L vacuum pump and PTO driven high pressure L27 pump c/w 4" valve for umbilical system
52. Hydraulic drive 13500L vacuum pump and PTO driven high pressure L35 pump c/w 4" valve for umbilical system

Centrifugal/High pressure pump options:

53. Hydraulic change over between vacuum pump and Centrifugal/High pressure pump
54. 360° rain gun in-lieu of 4" valve
55. Vertical control for rain gun - requires option 23
56. 4" Tee c/w ¼ turn valves for umbilical system providing 4" outlets to both sides
57. Brackets only for umbilical offload arm
58. Auto connecting umbilical offload arm (pod not included) in-lieu of 4" valve
59. 4" Pod for umbilical offload arm
60. 4" Manual valve for umbilical system (requires options 23 or 27)

FILL OPTIONS

61. 6" hydraulic valve
62. Additional 8" hydraulic valve
63. 6" Extra Fill Valve c/w quick attach
64. 8" terra cone
65. For top till tankers only, 4" valve in pipework leading to spreading plate
66. NC Hydraulic Self locking top fill hatch c/w remote greasing
67. Sliding Top fill hatch
68. Extra 6" - 20' (6m) suction hose complete with fitting
69. Male end to connect to suction hose
70. Extra set of hose carriers (6" or 8")
71. 8" Suction hose (6m) c/w 8" fill points and 1x8" quick attach in lieu of 6"
72. Extra 8" - 20' (6m) suction hose c/w fitting
73. 6" Extra Fill Point Blanked
74. 8" Extra Fill Point Blanked
75. 8" Extra Fill Valve c/w quick attach
76. Auto fill brackets, for retro-fit – specify 6" or 8", also location
77. 6" Auto Fill single direction c/w pot
78. 8" Auto Fill single direction c/w pot and 8" hose
79. 6" Auto Fill Dual Direction c/w pot
80. 8" Auto Fill Dual Direction c/w pot and 8" hose
81. Extra 6" Auto Fill Pot
82. Extra 8" Auto Fill Pot
83. 6" Turbo Filler (available on single sided auto-fill arm or front fill point)
- 53.8" Turbo Filler (available on single sided auto-fill arm or front fill point)

SPREAD OPTIONS

84. 10m wash-down hose c/w 6" coupling
85. Front and rear empty system

86. Traditional Over-the-hedge boom with swivel behind tracks
87. Short version Over-Hedge Boom with Revoblock Swivel
88. Brackets only to suit over the hedge boom

AXLES

89. 150 stepped axle c/w 420 x 180 brake in-lieu of 120mm axle (1600-2050 recessed only). Lowers tanker by 85mm
90. 150 stepped axle c/w 420 x 180 brake in-lieu of 150mm axle (20250 only). Lowers tanker by 100mm
91. 150 beam axle c/w 520 x 180 brakes in-lieu of 150mm 30% extra braking capacity over 420 x 180 brakes) *It is recommended to fit this option to 3000 gallon tankers*
92. Command steering c/w weld-on K80 spoon in lieu of self steering (Tandem only)
93. 150mm beam axle c/w 420 x 180 brake in-lieu of 120mm beam (1600 - 2250 recessed only) options 59 & 60 not available in Top Fill Tankers

OTHER

94. Various Cab Control Options
95. 12 volt 6 port diverter to combine two hydraulic functions in one. In cab control box c/w toggle switch and suction mount
96. Full length pipe trays on twin axles tankers (200mm high)
97. 6" - 4" reducer (Bauer)
98. 6" Bauer blanking cap
99. Additional sight glass
100. Float type level indicator (can be used either as a level indicator or a load sensing for the brakes)
101. Vertical hydraulically driven internal agitator

102. Wide angle PTO in lieu of standard PTO
103. Single Axle mud guards (non recessed only)
104. 24" galvanised access hatch mounted to rear
105. Weight transfer (dual compartment)
106. 12" front access cleaning point
107. Spray Suppression in-lieu of standard mudflaps
108. Side Impact Protection
109. Rear underrun (only required if being registered as a trailer)
110. Plastic handwash tank; (50L) c/w soap dispenser
111. 6" riv blade valve (watertight) in lieu of standard 6" valve
112. 8" riv blade valve (watertight) in lieu of standard 6" valve
113. 4" riv blade valve (watertight) in lieu of standard 6" valve
114. Mud Flaps for single axle tanker
115. Central greasing points for suspension and axles tandem
116. Central greasing points for suspension and axles tridem

Standard colours NC: Red (RAL 3001), Green (RAL 6001), Blue (RAL 5005)
All other colours (Minimum 3 week lead time on paint and a RAL colour must be specified)
Please contact your local dealer or sales representative for breaking and lighting options.

